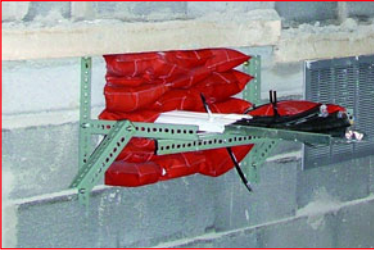


ENVIROGRAF® PRODUCT 1

INTUMESCENT FIRE AND SMOKE STOP PILLOWS



DESCRIPTION

A true Intumescent pillow that can be supplied in two types. Each pillow is made from a hard-wearing fireproof glass cloth, filled with a fireproof sponge and intumescent. Type P/S is a soft pliable pillow that enables awkward areas to be filled, e.g. around cables, pipes and services, etc. Type P is a much more solid pillow, which is still pliable and flexible, enabling it to fill around services, but it can be fitted like a brick.

USE

Pillows are used for packing into gaps around pipes, cables, and over cable trays. They can be fitted to any size of opening, and give permanent or temporary fire protection and smoke sealing. Suitable for computer/clean/sterile areas. Can be used for overnight protection where work is in progress. To ensure pillows are not lost, they can be fitted with a tag and loop and wired together for security – they can be taken out and retained for re-insertion.

PERFORMANCE

This product was included in a fire resistance test employing the general procedures and criteria of BS476 Part 22 (1987). An integrity of 128 minutes was achieved (compressible type 240 minutes). Also tested at VNE to European Standard EN1363-1 (2000).

ORDERING REFERENCES:

Ref	Size	Ref	Size
P1	40 x 150 x 150mm	P5	80 x 127 x 250mm
P2	40 x 225 x 225mm	P6	80 x 300 x 300mm
P3	40 x 300 x 300mm	P7	80 x 225 x 225mm
P4	40 x 127 x 250mm		See price list for other sizes

In areas requiring removal and re-fitting of pillows, security tags can be fitted

PATENTED