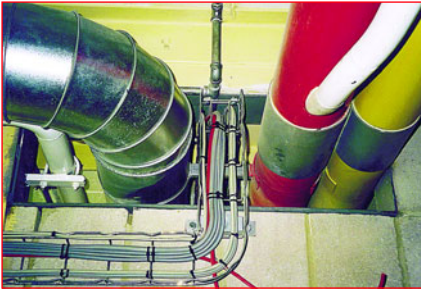


ENVIROGRAF® PRODUCT 4

INTUMESCENT-COATED SLABS



DESCRIPTION

A high density rock fibre slab with intumescent coating on both sides, which can be easily cut with a sharp knife and over painted or decorated. Appropriate jointing compound is supplied.

USE

Suitable for use as a permanent fire barrier in walls and floors. In large floor openings they should be supported with wire mesh. Intumescent Jointing Compound is supplied with each slab for fixing sections together. Unit IS100 is ideal for use over door frames, between the frame head and ceiling. Where there are PVC pipes and cables use Envirograf® pipe wraps (Product 7).

PERFORMANCE

This product was included in a fire resistance test employing the general procedures and criteria of BS476 Part 22 (1987). An integrity of 240 minutes was achieved.

ORDERING REFERENCES :

| Ref | Dimensions |
|-------|------------------------|
| IS 50 | 50mm x 600mm x 1200mm |
| IS100 | 100mm x 600mm x 1200mm |

(1 hour - 4 hours fire rating)

PATENTED