

ENVIROGRAF® PRODUCT 7

INTUMESCENT WRAPS



DESCRIPTION

Three types of very economical foil-clad Intumescent wraps for pipes and cables. A limited range of acoustic protection versions is also available.

USE

For use around pipes or cables in brick or block walls, and in concrete floors. Also for use with Products 4, 5, and 6, the wrap is pushed into the hole, leaving a 10mm gap back from the wall face for pointing with sand and cement or slab coating. The wraps will crush PVC pipes, trunking, and cables, and will cool steel pipes when attacked by fire – an economical way to protect services. A label is supplied to adhere to treated pipes or cables, for identification to the relevant authorities. See also Envirograf® Products 25 and 110 for cable and pipe protection.

PERFORMANCE

This product underwent a series of fire resistance tests employing the general procedures and criteria of BS476 Part 22 (1987). It has been tested on sealing penetrations of various pipes passing through different types of floors and walls. Integrity results of up to 249 minutes were achieved.

ORDERING REFERENCES :



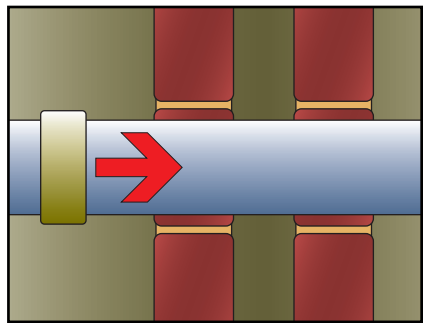
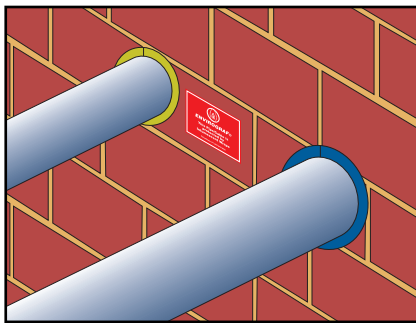
Reference	External Pipe Diameter	Depth of Wrap	Rating
EW#	18mm to 600mm	30mm	1-3 hrs
(# = external pipe/cable size)		50mm	1-4 hrs

Diameters over 215mm have varying depths of 100-200mm
(See price list for full range)

Ordering example:

For 83mm external diameter PVC pipe, order EW83/3 for 1 hour to 3 hours, or EW83/4 for up to 4 hours

A label is provided for application to the protected service(s)



NEW INTUMESCENT WRAP IN A 10m ROLL FORM

DESCRIPTION

This continuous wrap on a roll is ideal for fire protection of multiple pipes and cable services. Cut to size and wrap around the service. Two widths available. Protection up to four hours.

PERFORMANCE

This product has been tested to BS476 Part 20 (1987) and EN1366-3 (2000).

ORDERING REFERENCES :



EWE1	30mm wide wrap	1-3 hours protection up to 200mm diameter
EWE2	50mm wide wrap	1-4 hours protection up to 400mm diameter