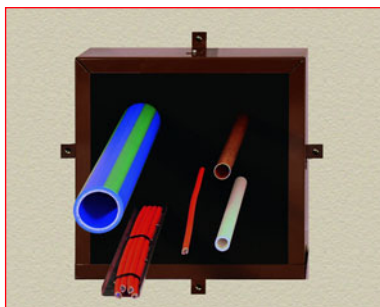


ENVIROGRAF® PRODUCT 16

MULTI-PURPOSE BOX



DESCRIPTION

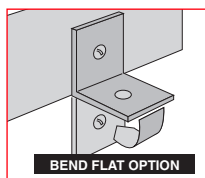
Envirograf® multi-purpose boxes comprise a box section containing intumescent material, with a section that can be removed to allow the unit to be used in tight corners, to fit over existing services. The fixing brackets are adjustable by bending them flat, for fitting into corners or for when the box is flush against the ceiling, floor, or wall. A fire-resistant sponge smoke seal is supplied with each unit. This can be cut easily with a knife, allowing services to pass through the unit, but sealing the gaps against smoke penetration, so the underlying hole in the floor or wall can remain open.

USE

The Envirograf® multi-purpose box is the most versatile of its kind available and has been specifically designed for most installation requirements where services pass through fire barrier ceilings, floors, and walls. It can be surface-mounted or recessed.

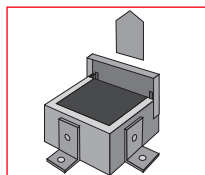
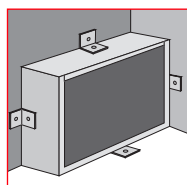
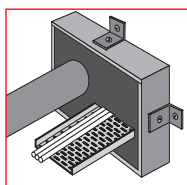
PERFORMANCE

The multi-purpose box was tested to BS476 Parts 20 and 22 (1987), achieving up to 4 hours of fire protection. Also tested at VNE to European Standard EN1363-1 (2000).

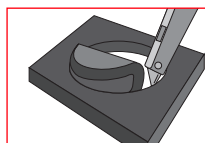
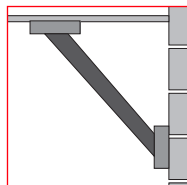
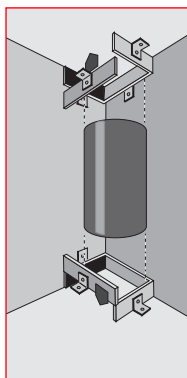


SPECIAL FEATURES:

A detachable section allows the unit to be used in tight corners



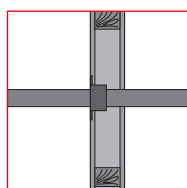
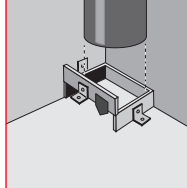
Special fire-resistant sponge smoke seal, easily cut to allow services through



The sponge smoke seal simply slides into flange section from the front



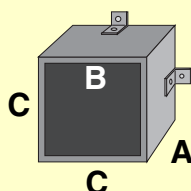
Adjustable brackets allowing multiple fixing options



ORDERING REFERENCES :

BOX SIZES (OTHER SIZES MADE TO ORDER)

REF	DEPTH(A)	INTERNAL(B)	EXTERNAL(C)
EB 45/ 50	50mm	45mm	67mm
EB 55/ 50	50mm	55mm	76mm
EB 72/ 50	50mm	72mm	93mm
EB 83/ 50	50mm	83mm	105mm
EB115/ 50	50mm	115mm	138mm
EB135/ 50	50mm	135mm	155mm
EB166/ 50	50mm	166mm	196mm
EB166/100	100mm	166mm	196mm
EB215/050	50mm	215mm	255mm
EB215/100	100mm	215mm	255mm
EB265/100	100mm	265mm	315mm
EB315/100	100mm	315mm	365mm



PATENTED