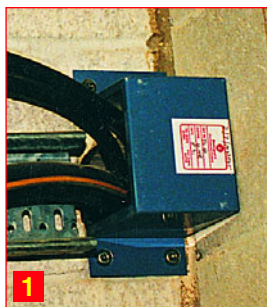


ENVIROGRAF® PRODUCT 18

INTUMESCENT PIPE COVERS



DESCRIPTION

Metal saddle units in two depths (50mm for 2 hours protection and 100mm for 4 hours protection), supplied in a variety of standard sizes. Other sizes made to order.

USE

For use with single or multiple pipes, units are available for use where pipes are tight to the wall (1), over pipes and trunking penetrating suspended ceilings (2), or in corners (3).

PERFORMANCE

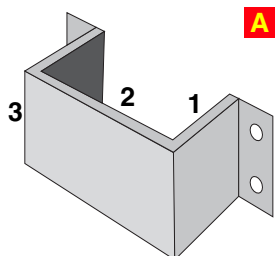
Tested to BS476 Parts 20 & 22 (1987), achieving 60 minutes integrity and 28 minutes insulation. Also tested at VNE to European Standard EN1363-1 (2000).

ORDERING REFERENCES :

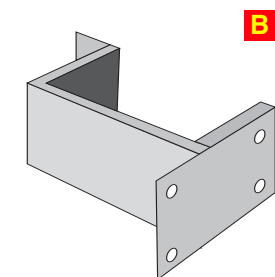


Ref (2 hrs)	Ref (4 hrs)	Internal	External
PC 50/2	PC 50/4	50mm	55mm
PC 65/2	PC 65/4	65mm	72mm
PC 75/2	PC 75/4	75mm	83mm
PC100/2	PC100/4	100mm	110mm
PC127/2	PC127/4	127mm	130mm
PC150/2	PC150/4	150mm	160mm
PC175/2	PC175/4	175mm	180mm
PC200/2	PC200/4	200mm	210mm
PC225/2	PC225/4	225mm	235mm
PC250/2	PC250/4	250mm	260mm
PC300/2	PC300/4	300mm	310mm

See price list for full range. Other sizes made to order: state internal dimensions (1 and 2) and the depth (3) as depicted in the 'U-bracket' illustration A below left

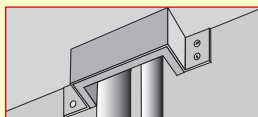
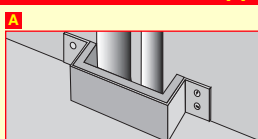


'U' Bracket

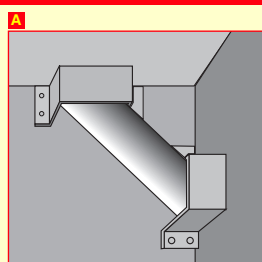


Corner Bracket

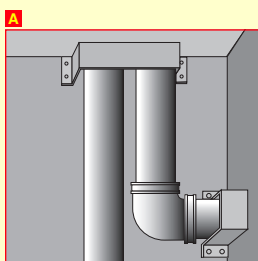
Application



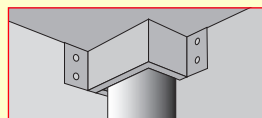
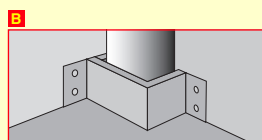
'U' Brackets



'U' Brackets with angled service



'U' Brackets with multiple service penetrations



Corner Brackets