

INTUMESCENT TOILET/BATHROOM VENTILATION OUTLET PROTECTION



DESCRIPTION

Intumescent protection for both ceiling and wall ventilation outlets. Can be easily installed in about four minutes. Used with outlets which connect to toilet/bathroom ventilation fans. Available in sizes from 50mm to 600mm diameter, for domestic and industrial applications. The internal linings are non-clogging and leave 90% free ventilation area. **The range now includes superb new Firoblok® external protection sleeves for PVC ventilation outlets.**

USE

- (A) Internal intumescent liner for PVC or steel ventilation pipes in a wall
- (B) Length of grey PVC 110mm outside diameter pipe with internal intumescent liner
- (C) Length of steel tube fitted with an internal intumescent liner, for cavity walls
- (D) Intumescent-lined metal collar for use in suspended or plasterboard ceilings and ductings, supplied with fixing brackets, screws, and washers
- (F) Firoblok® externally-fitted intumescent protection for PVC ventilation outlets

PERFORMANCE

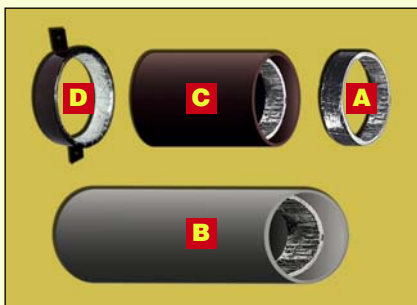
Products were rigorously tested BS476 Parts 20 and 22 (1987), achieving an integrity of 120 minutes. The new Firoblok® products were tested to BS476 Part 21 (1987), achieving an integrity of 90 minutes.

ORDERING REFERENCES :

PATENTED

Internal intumescent liner (See A):

Ref	(Pipe ID* mm)	Rating
LV 50/1	50	1 hour
LV 75/1	75	1 hour
LV 98/1	98	1 hour
LV100/1	100	1 hour
LV100/2	100	2 hour
LV150/1	150	1 hour
LV200/1	200	1 hour
LV225/1	225	1 hour
LV300/1	300	1 hour



Length of grey PVC 110mm OD* pipe with internal intumescent liner (See B):

Ref	Pipe Length (mm)	Rating
LV225/P	225	1 hour
LV300/P	300	1 hour
LV450/P	450	1 hour

Metal sleeve with internal intumescent liner for cavity walls (See C):

Ref	(Pipe ID* mm)	Rating
LVM100/1	100	1 hour

Metal sleeve with fixing brackets and internal intumescent liner, for suspended or plasterboard ceilings, supplied with fixing screws (See D):

Ref	(Pipe ID* mm)	Rating
LVML 98/1	98	1 hour
LVML100/1	100	1 hour
LVML150/1	150	1 hour

New Firoblok® external protection sleeve for PVC ventilation outlets (See F):

Ref	(Service OD* mm)	Hole (mm)	Rating
EC 80	80	88	1½ hours
EC100	100	105	1½ hours
EC125	125	130	1½ hours
EC150	150	155	1½ hours

*ID=internal diameter & OD=outside diameter (Other sizes made to order, including square/oblong sections)

NEW AUTOMATIC CLOSURE GRILLE NOW AVAILABLE!**DESCRIPTION**

Envirograf® intumescent ventilation grilles are specially designed for 100mm, 150mm, 200mm, and 300mm plastic or metal ducting apertures. They can be wired into a 24V fire alarm system, to close the grille's shutter when the power is turned off. Alternatively, a 240V to 24V transformer can be supplied, for wiring into a smoke detector system. If a 24V system is not available, a memory spring closure option is available, which is activated when the shutter temperature reaches 80°C.

USE

This product range is designed to be used on rectangular or circular, plastic or metal ventilation ducting. The grilles contain intumescent strips fixed to the inner grille plate and these seal up in a fire to maintain the integrity of the fire-rated ceiling, floor, or wall compromised by the ducting.

PERFORMANCE

This product range has been tested and achieved 60 minutes fire protection.

ORDERING REFERENCES :**PATENTED****FOR CIRCULAR DUCTING****LVC/AUTO/100** 100mm**LVC/AUTO/150** 150mm**LVC/AUTO/200** 200mm**LVC/AUTO/250** 250mm**LVC/AUTO/300** 300mm**CIRCULAR MEMORY SPRING OPTION****LVC/MEM/100** 100mm**LVC/MEM/150** 150mm**LVC/MEM/200** 200mm**LVC/MEM/250** 250mm**LVC/MEM/300** 300mm**FOR RECTANGULAR DUCTING****ACG/AUTO/100** 100mm**ACG/AUTO/150** 150mm**ACG/AUTO/200** 200mm**ACG/AUTO/250** 250mm**ACG/AUTO/300** 300mm**RECTANGULAR MEMORY SPRING OPTION****ACG/MEM/100** 100mm**ACG/MEM/150** 150mm**ACG/MEM/200** 200mm**ACG/MEM/250** 250mm**ACG/MEM/300** 300mm