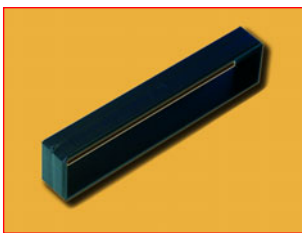


ENVIROGRAF® PRODUCT 50

INTUMESCENT LETTER BOX LINER



DESCRIPTION

An intumescent liner comprising two L-shaped sections fitted with self-adhesive backing tape on the for ease of fixing. The liner can be cut to size with a sharp knife to fit the opening. Sizes to suit other openings can be made to order.

USE

For letter apertures in fire doors, where existing letter flaps are to be used. Aperture sizes up to the limit for each type (LBL1 and LBL2) can be accommodated by cutting the liner with a sharp knife as required. A bare wood aperture must be sealed with paint or wood sealer before fixing the liner. Suitable for fitting to doors from 38mm to 70mm thick.

PERFORMANCE

These products were included in a test employing the general procedures and criteria of BS476 Part 22 (1987) built into a composite door, maintaining the integrity of the door for 61 minutes. Also tested to European Standard EN1634-1 (2000), achieving 68 minutes.

ORDERING REFERENCES :

LBL1 (85x340mm) LBL2 (65x290mm) (Special sizes made to order)

