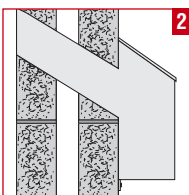
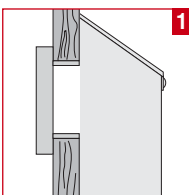
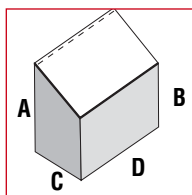


# ENVIROGRAF® PRODUCT GROUP 52

## INTUMESCENT METAL FIRE BOX AND FLEXIBLE FIRE BAG



### DESCRIPTION

Burning paper and liquids put through mail apertures in doors and walls can have devastating consequences, especially if premises are occupied. Nocturnal arson attacks on homes can be particularly worrying for domestic residents. The Envirograf® rigid firebox or flexible firebag protects mail slots, so homes and business can have the confidence that their premises are guarded against damaging and disruptive arson attacks. These products are safe to use because they do not contain liquids or gases. The intumescent lining puts out the flames.

### USE

The firebox/bag fits onto the back of the door (illustration 1) or wall (optional rigid spout for metal boxes shown in illustration 2). Fire is extinguished by the intumescent material, which can be easily renewed. Rigid metal fireboxes are supplied with a hinged lid and flush lock as standard, but a hinged front door is available as an optional extra. Use the flexible firebag (illustration 3) in situations where doors open tightly onto walls, allowing full door opening.

### PERFORMANCE

Tested to BS476 Part 22 (1987), achieving integrity of 39 minutes.

### ORDERING REFERENCES :

| Ref | A     | B     | C     | D     | Aperture     |
|-----|-------|-------|-------|-------|--------------|
| FB1 | 360mm | 300mm | 170mm | 375mm | 70mm x 275mm |
| FB2 | 360mm | 300mm | 90mm  | 375mm | 70mm x 275mm |
| FB3 | 360mm | 300mm | 200mm | 400mm | 70mm x 275mm |
| FB4 | 675mm | 600mm | 300mm | 600mm | 70mm x 275mm |



State if a front access door is required in the metal box (extra cost item). The standard metal box (FB) is fitted with a flush lock as standard, but can be supplied with a recessed lock at extra cost. Other sizes made to order.

|        |       |       |       |       |              |
|--------|-------|-------|-------|-------|--------------|
| FLEX1  | 335mm | 335mm | 130mm | 420mm | 70mm x 315mm |
| FLEX2  | 335mm | 335mm | 130mm | 420mm | 55mm x 330mm |
| FLEX3  | 260mm | 260mm | 95mm  | 400mm | 55mm x 290mm |
| FLEX4V | 560mm | 560mm | 130mm | 360mm | 70mm x 315mm |
| FLEX5V | 530mm | 530mm | 100mm | 300mm | 55mm x 290mm |

NB: FLEX3, FLEX4V, and FLEX5V are for use in UPVC moulded doors, with FLEX4V and FLEX5V being used in a vertical orientation. Flexible bags (FLEX) are fitted with metal turn-buttons and pressure-fastening strips.