

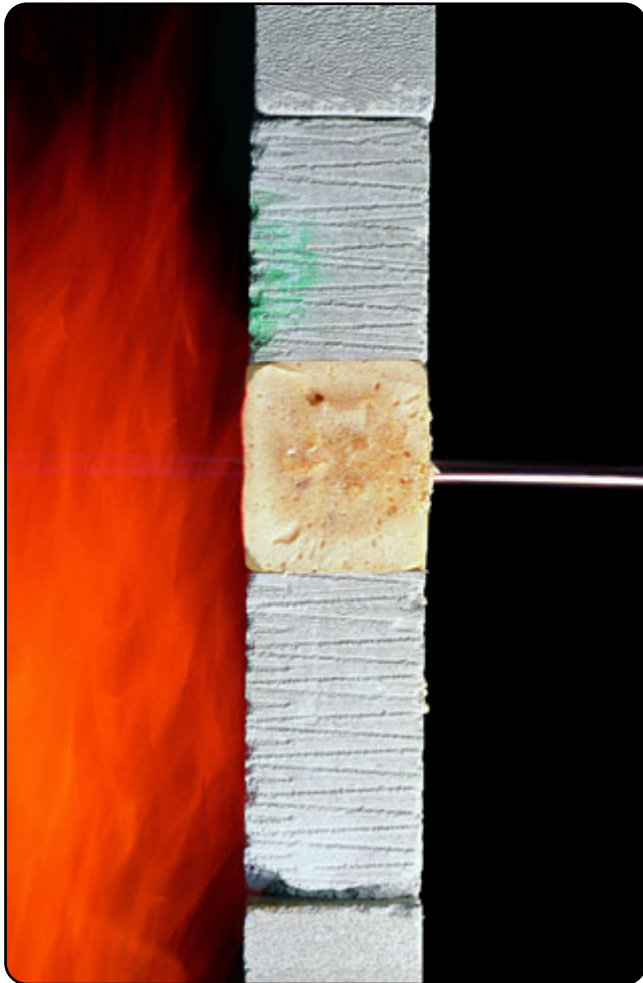


ENVIROGRAF®



FIREPROOF PVE/A FOAM FOR GAP FILLING GIVING UP TO 2 HOURS OF FIRE PROTECTION

PRODUCT 44 DATA SHEET



**THE FOAM WITH THE UNIQUE FLEXIBLE TUBE APPLICATOR FOR ALL THOSE
HARD-TO-REACH PLACES REQUIRING A FIREPROOF FILLER**

**SUPERB UNIQUE PROTECTION – IN TESTING, PROTECTED A 100mm THICK
BRICK WALL WITH A GAP OF 75mm HIGH x 1000mm WIDE FOR 130 MINUTES**



**PROTECTING PROPERTY
PROTECTING LIVES**



COPYRIGHT © 2008 INTUMESCENT SYSTEMS LTD

Intumescent Systems Ltd, Envirograf House, Barfrestone, Dover, Kent, CT15 7JG, United Kingdom

Phone: +44 (0) 1 304 842 555 – Fax: +44 (0) 1 304 842 666 – Email: sales@envirograf.com – URL: www.envirograf.com

FIREPROOF PVE/A FOAM

INTRODUCTION

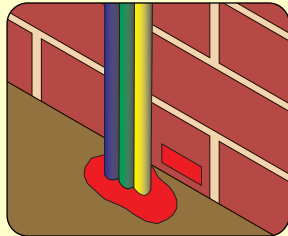
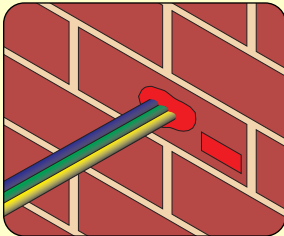
Unsealed gaps around electrical/plumbing services can allow fire to penetrate and spread throughout buildings, with potentially fatal consequences.

Envirograf® Product 44 (PVE/A Foam) is a unique, easily-applied, fast-acting spray foam, offering up to 2 hours of fire protection. This is ideal for filling many of the small service gaps left by electricians and plumbers.

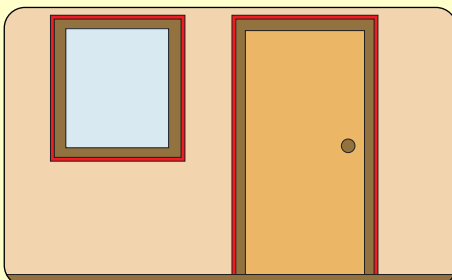
The Envirograf® PVE/A foam expands up to 40 times its original volume on application, making it ideal for filling awkward service openings and as a filling material for door frames and window frames.

Envirograf® PVE/A Foam emits virtually no toxic fumes or gases and it can be used in conjunction with other intumescent seals.

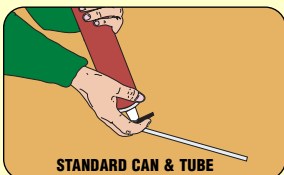
APPLICATION



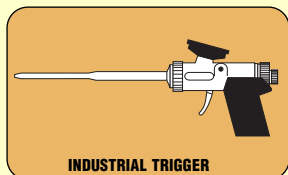
Use for plumbing and electrical service penetrations in ceilings, floors, and walls. Simply spray the foam into the hole area, allow to dry and cut flush with a sharp knife to finish. Envirograf® red intumescent coating can be supplied on request, together with product labels, to identify the fire-protected areas to building control officers and fire officers.



USE TO FILL GAPS IN DOOR AND WINDOW FRAMES



STANDARD CAN & TUBE



INDUSTRIAL TRIGGER

ORDERING REFERENCES:

- PVE/A Standard 750ml can with tube trigger
- PVE/A/G Special 750ml can for use with industrial trigger
- INDGUN Industrial trigger for aerosol can
- PVE/A/S1 150ml solvent cleaner
- PVE/A/S2 500ml solvent cleaner

IMPORTANT: PVE/A solvent should be purchased to clean tubes and triggers (to maximise yield) and clean any spillages in work area

UNIQUE IDENTIFICATION SYSTEM FOR BUILDING CONTROL/FIRE OFFICERS



Envirograf® PVE/A Foam is supplied with a red coating for application to the foam surface when dry. Product identification is often required by building control/fire officers. The red coating and a label supplied clearly identify that the foam used is Envirograf® fire rated.

SPECIAL APPLICATIONS



A flexible tube can be used when filling gaps behind existing door frames, by drilling a hole and pushing the tube in to apply foam into the cavity in all directions. To finish, plug the drilled holes.

INDUSTRIAL TRIGGER PACK



A special can (PVE/A/G) and trigger gun (INDGUN) are designed to be used together for precise and economical injection of foam. The aerosol can screws onto the trigger unit in the inverted position. A flexible tube is supplied to fit onto the end of the rigid trigger unit for any difficult-to-reach places.

PVE/A/S SOLVENT CLEANER



Envirograf® solvent cleaner is an absolutely essential item for use after applying Envirograf® PVE/A Foam. It cleans the aerosol can nozzle, application tube, and trigger, yielding greatest economy. It can be used to clean any spillages from the work area.

REGIONAL OFFICE: